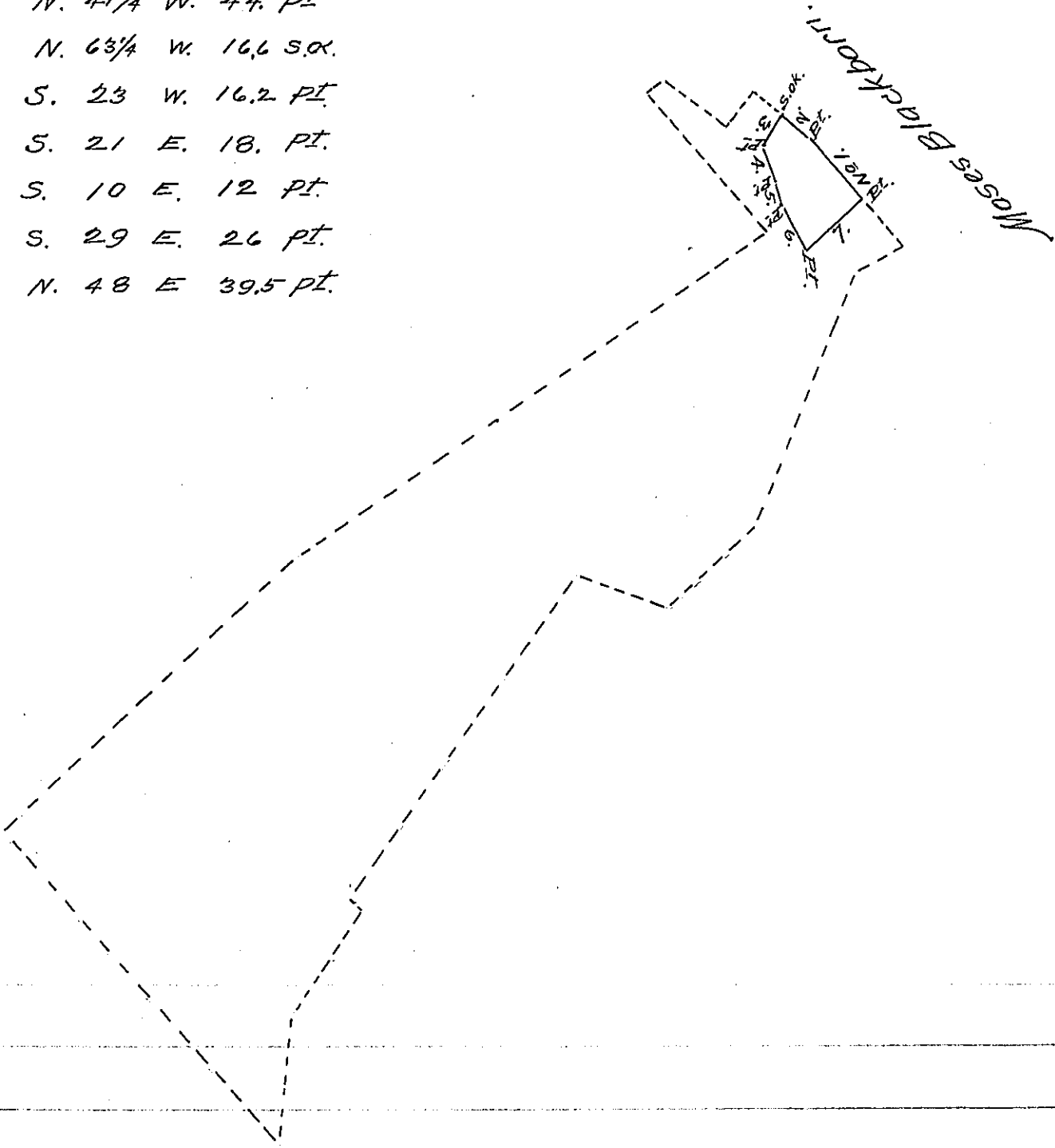


- Nº 1 N. 41³/₄ W. 44. PT
- 2. N. 63³/₄ W. 16.6 S.O.
- 3. S. 23 W. 16.2 PT.
- 4. S. 21 E. 18. PT.
- 5. S. 10 E. 12 PT.
- 6. S. 29 E. 26 PT.
- 7. N. 48 E 39.5 PT.



Situate in Manallen Township Adams County -
 Containing 9^a 136^{rs} and allowance part of 431^a 37^{rs} and
 Allowance Surveyed by Moses McClean in pursuance of
 a Warrant to Frederick Warren dated the 7th day
 of May 1794 Surveyed to Samuel Osborn the 21st
 day of March 1823.

To Gabriel Hiester Esq. } By Jn^o Dickson ^{late} D.S.
 Surveyor General - }

Examined & certify'd August 4th 1825.

To Gabriel Hiester Esq. } Sam^l Sloan D.S.
 Surveyor General. }

IN TESTIMONY that the above is a copy of the original remaining on file in
 the Department of Internal Affairs of Pennsylvania, made
 conformably to an Act of Assembly approved the 16th day of
 February, 1833, I have hereunto set my Hand and caused
 the Seal of said Department to be affixed at Harrisburg,
 this eleventh day of June 1907.

Henry Howell
 Secretary of Internal Affairs.